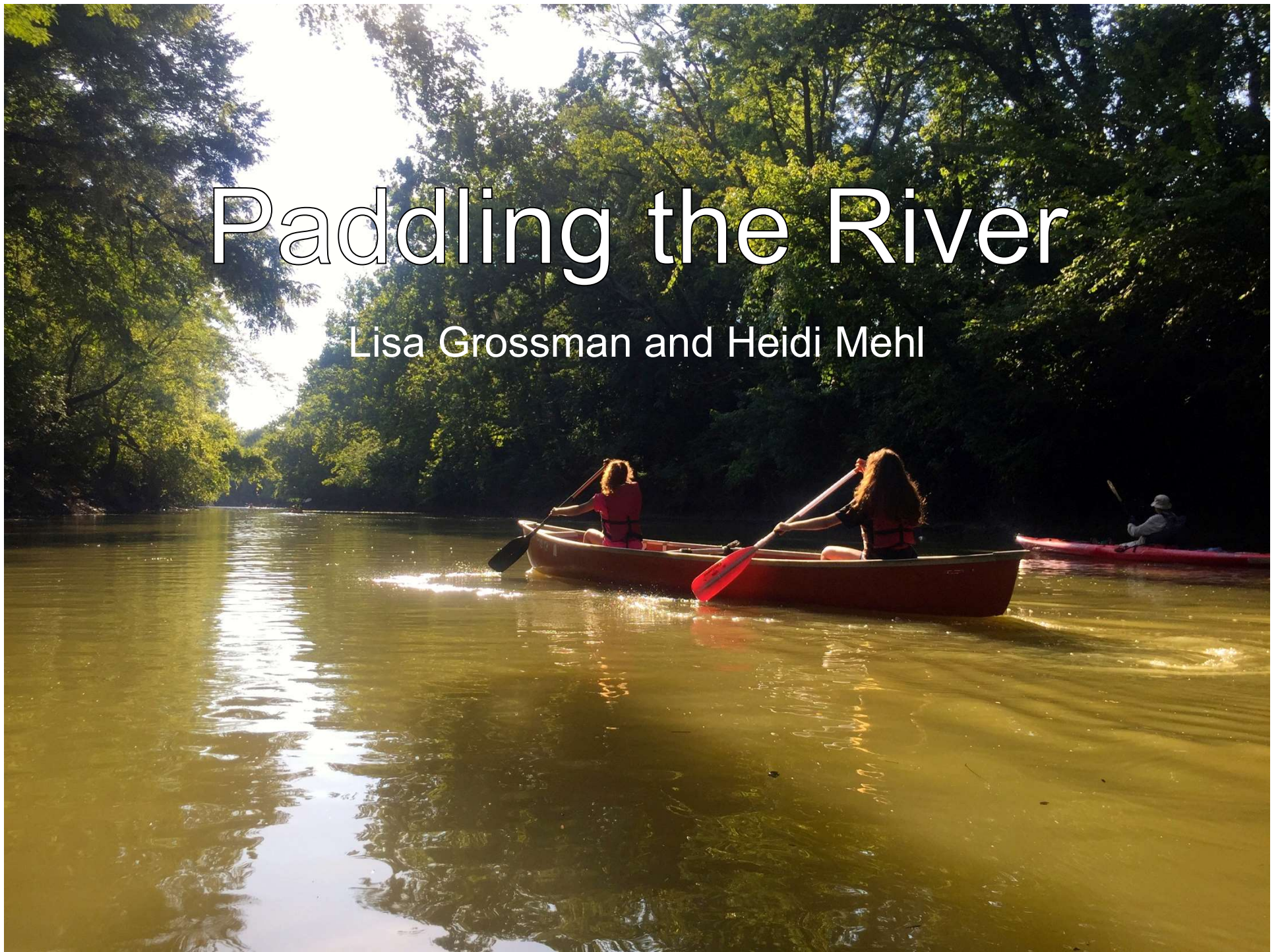


# Paddling the River

Lisa Grossman and Heidi Mehl



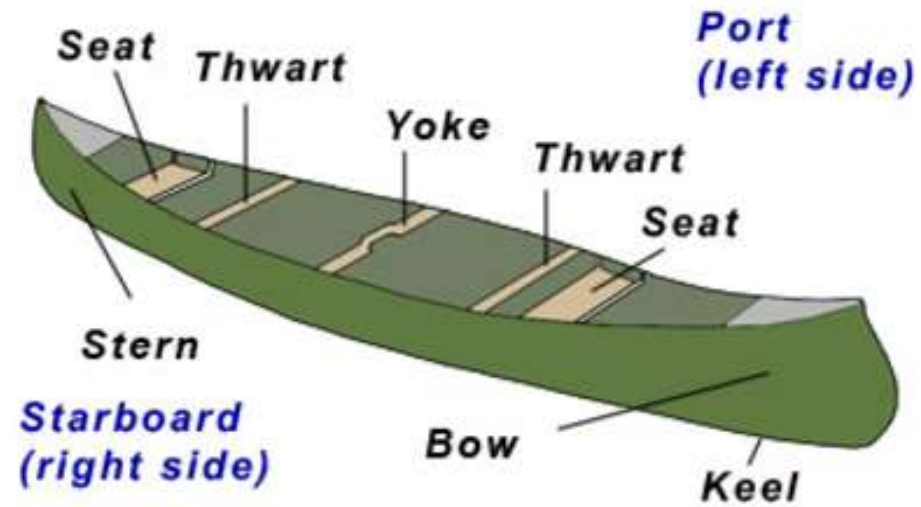


# FOK Paddle Trips

Haven't had a chance to join one of our paddle trips yet?  
Take a look at what you're missing!

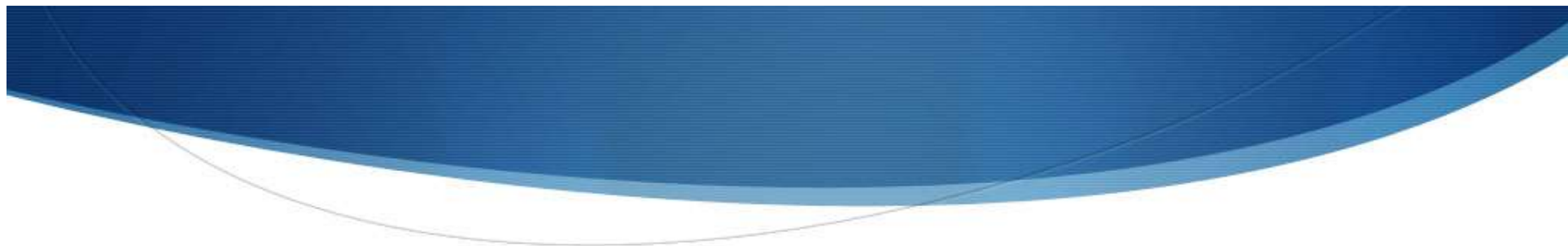


## Parts of the Canoe

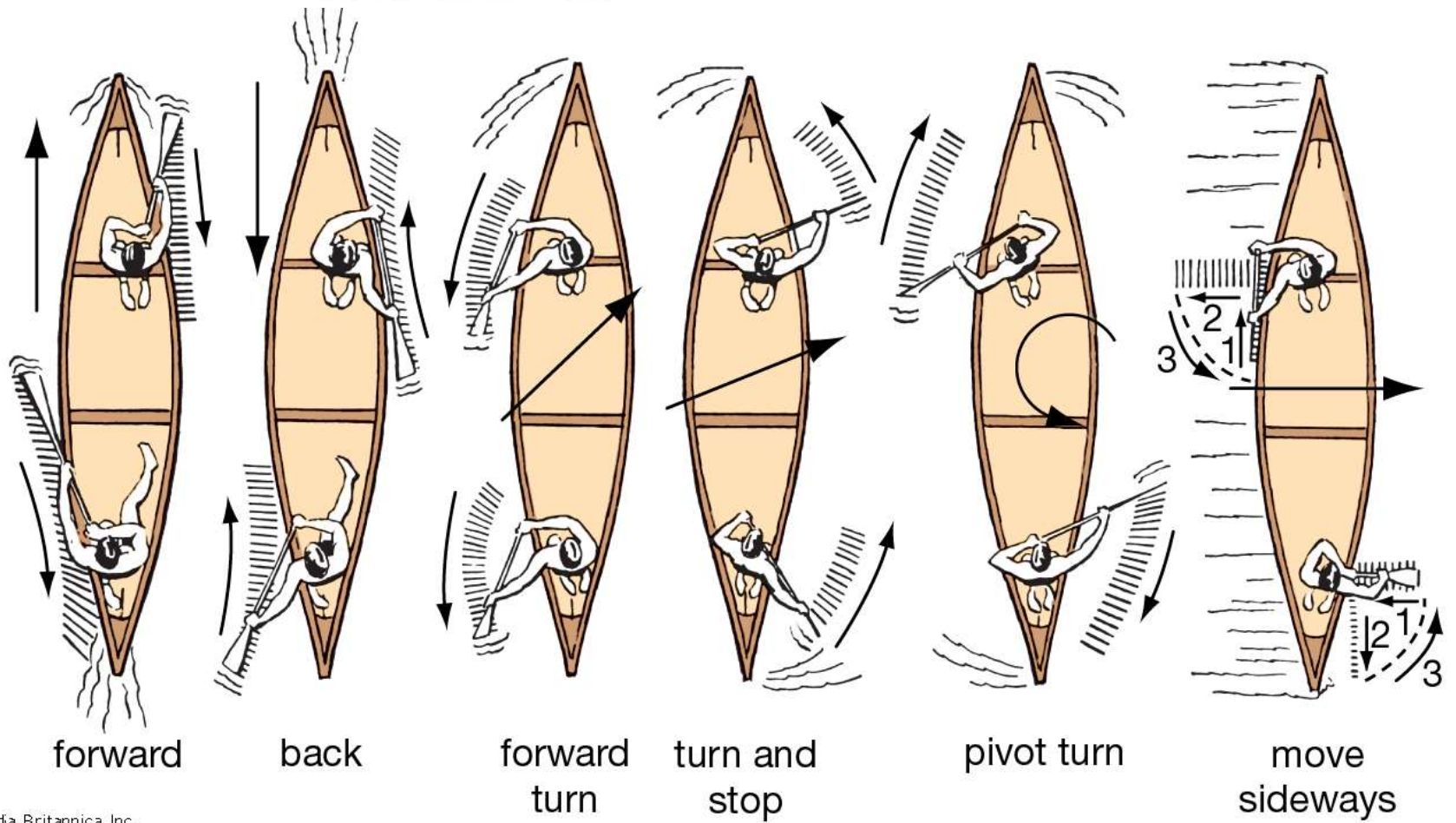


## Parts of the Paddle

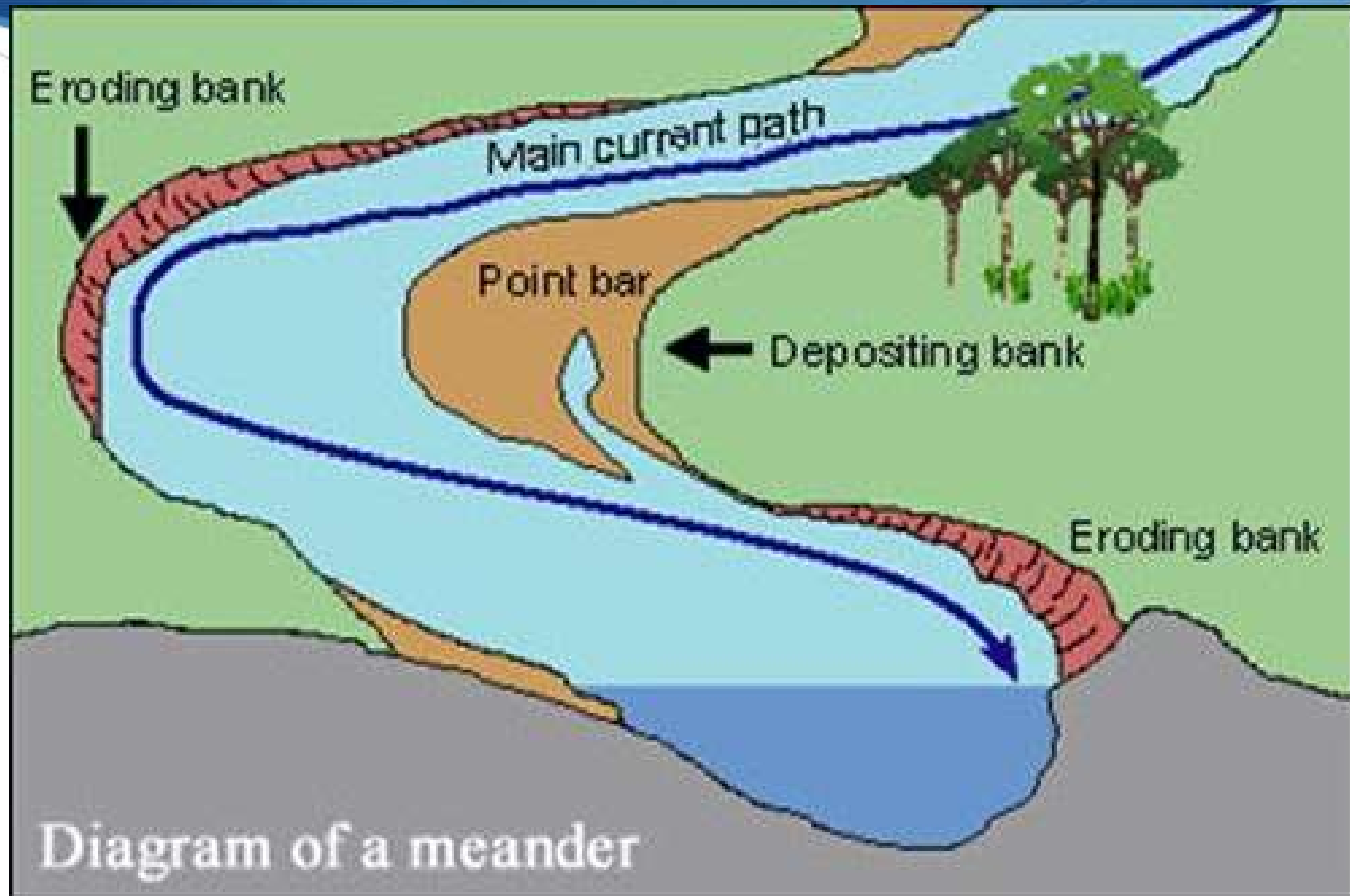


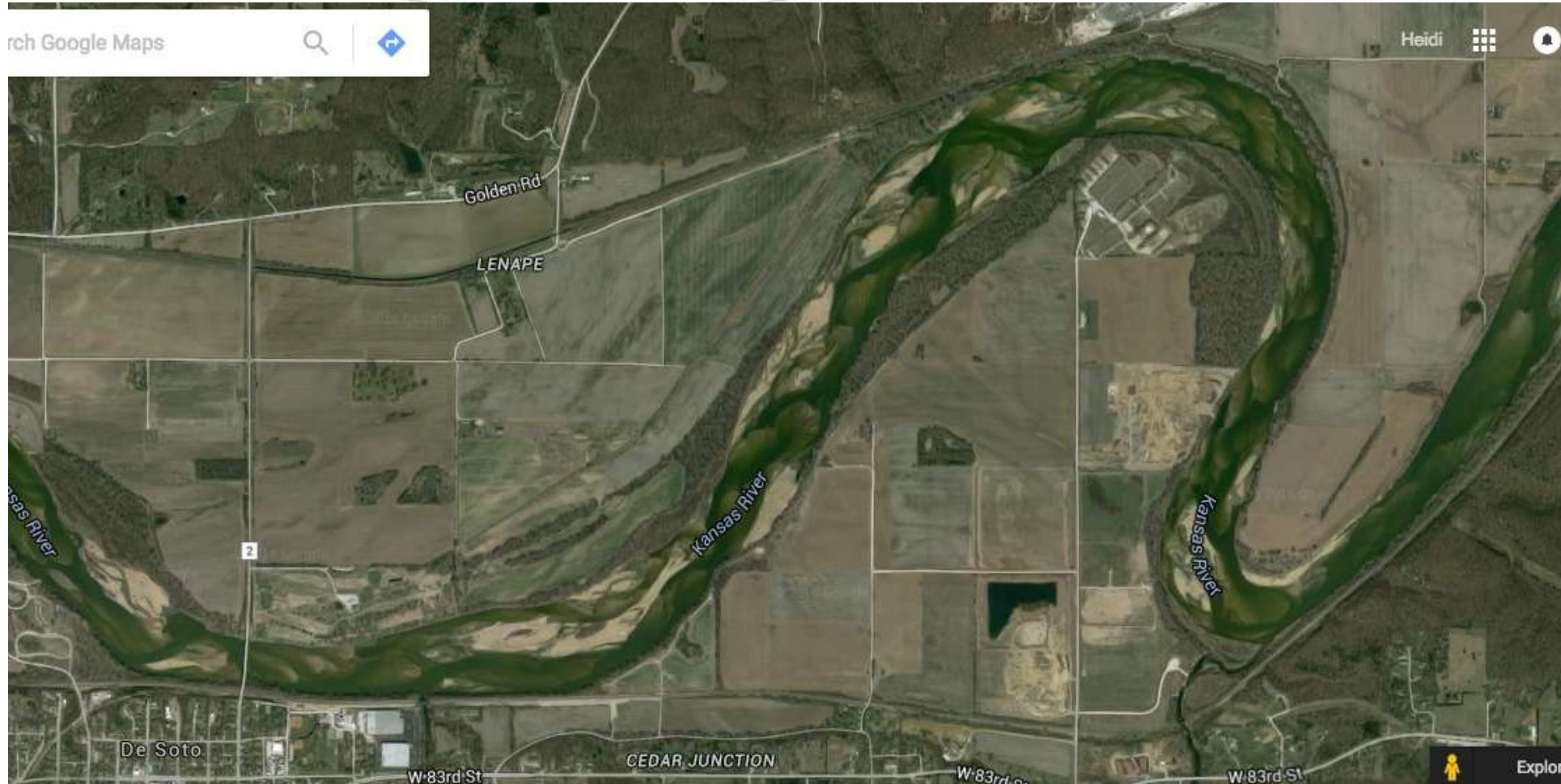
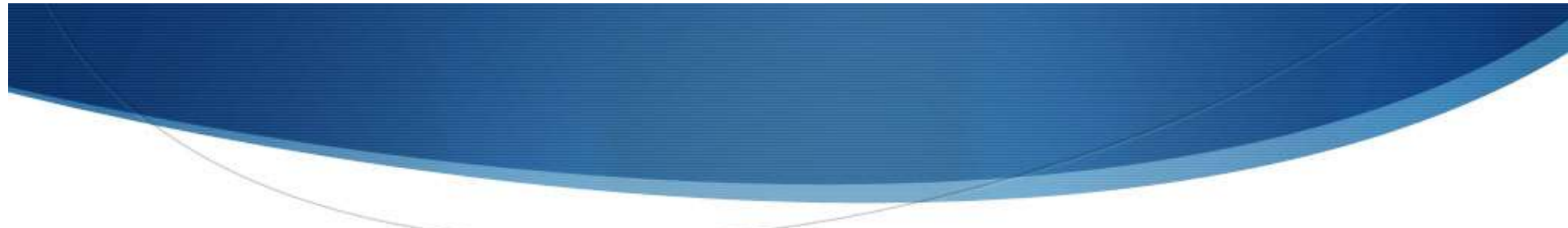




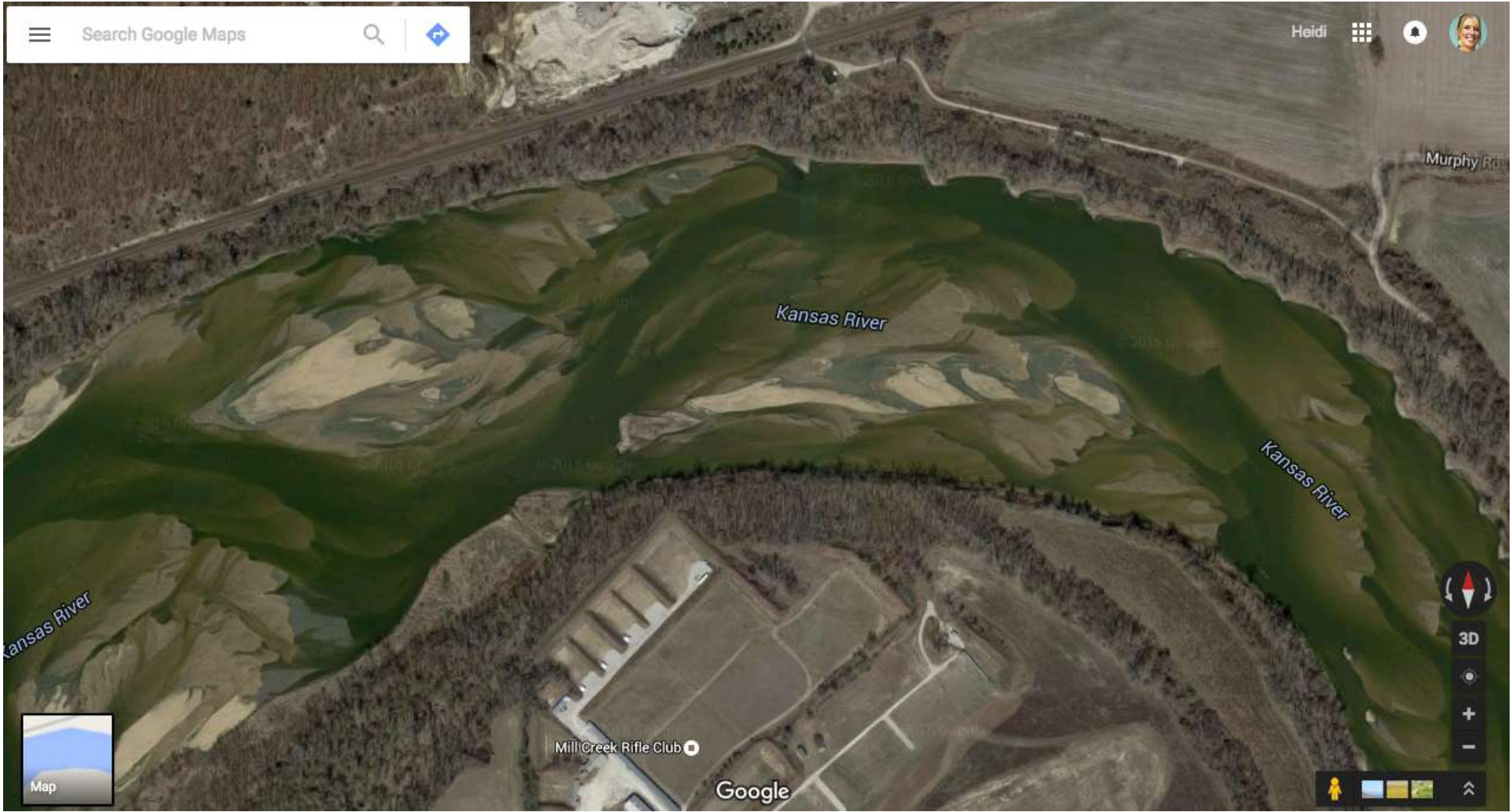


# Following the Channel







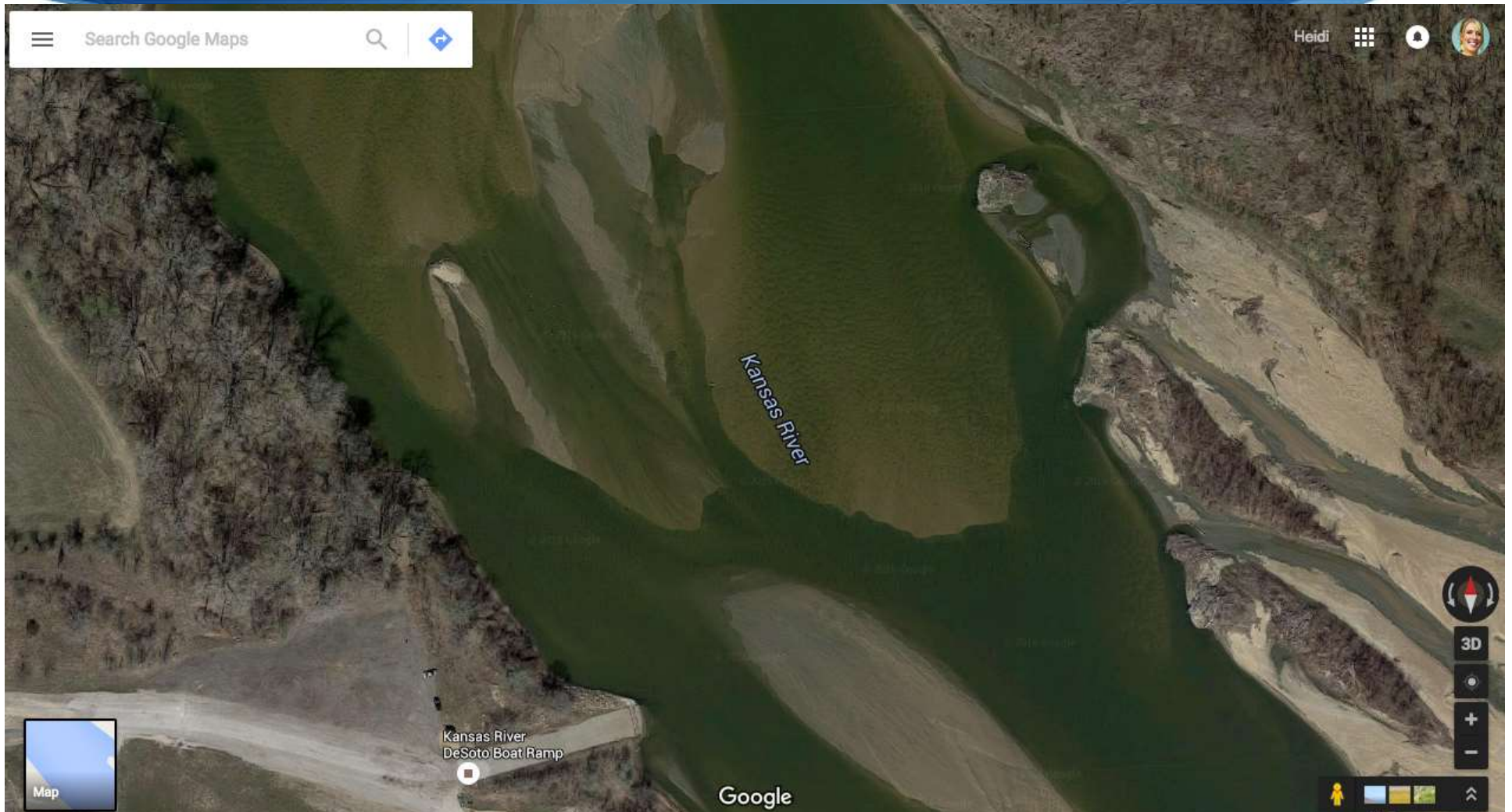




# Reading the River

- 💧 **Look ahead**
- 💧 **Know what's underneath**
- 💧 The Kansas River is wide and shallow in most places
- 💧 Don't get lulled into a false sense of security
- 💧 Always check water levels and reservoir releases before getting on the river

# Sandbars





# Strainers







Fishing lines

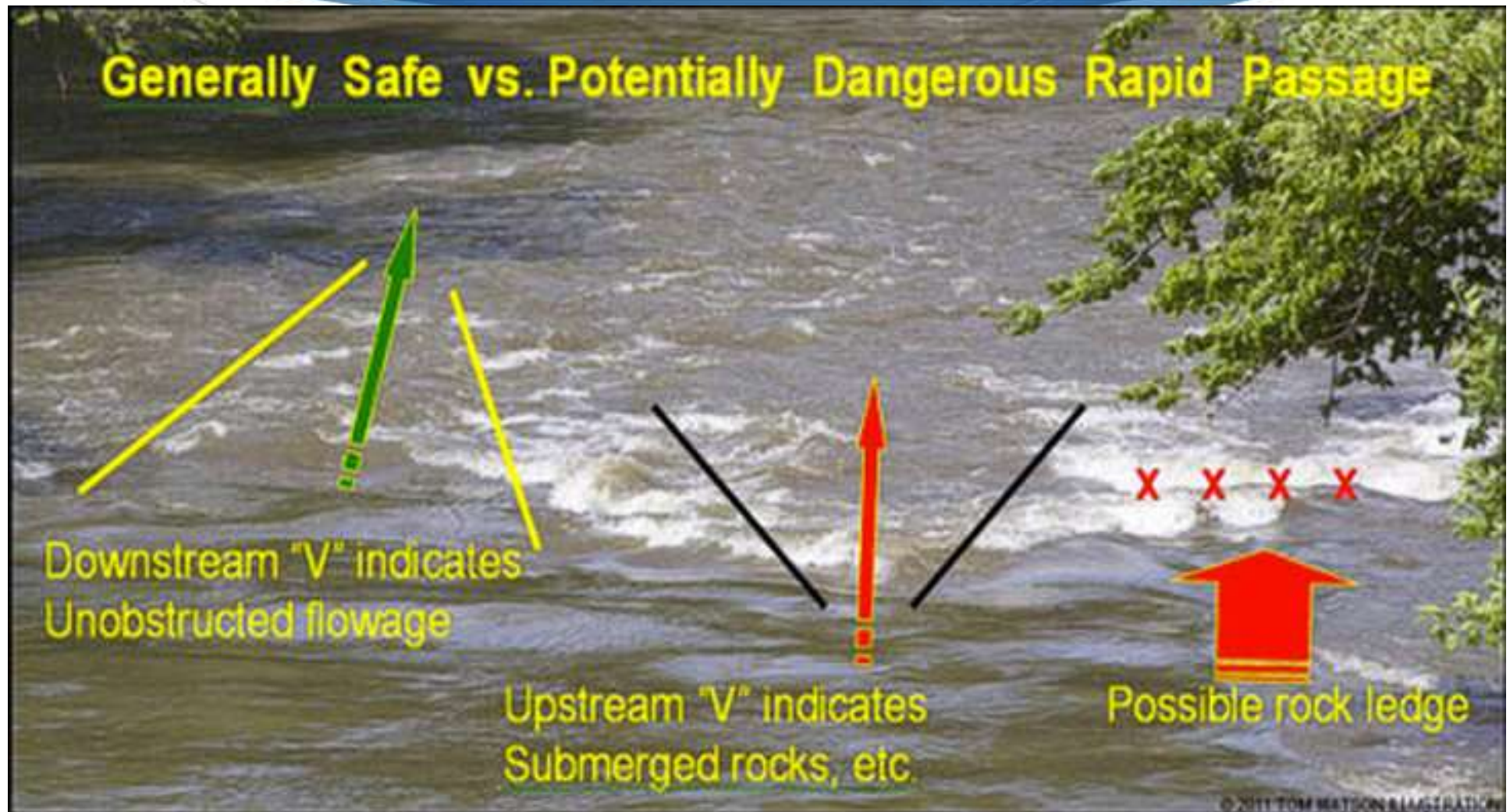


# Partially Submerged Trees/Rocks

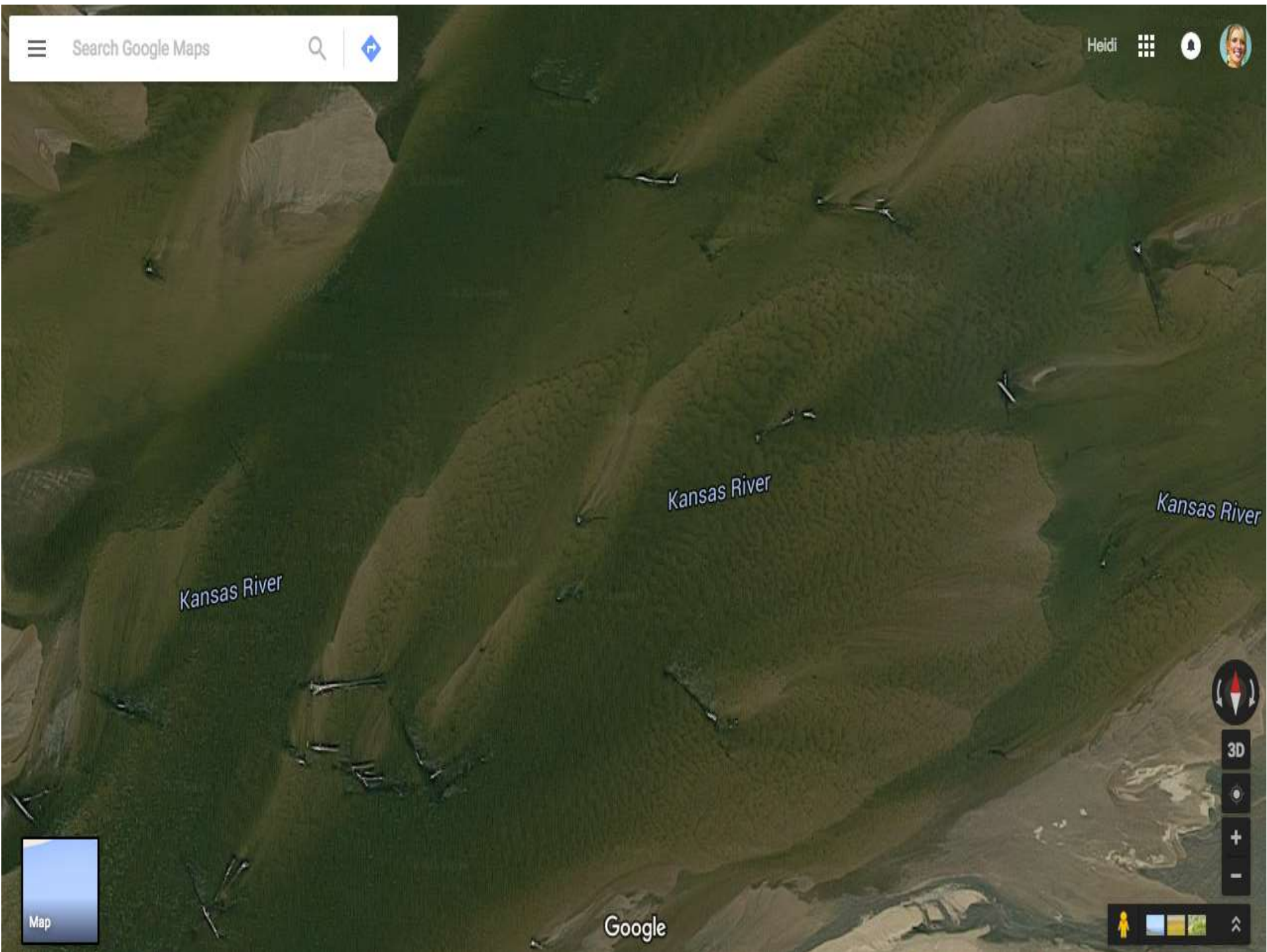
- Look for upstream-pointing “V”



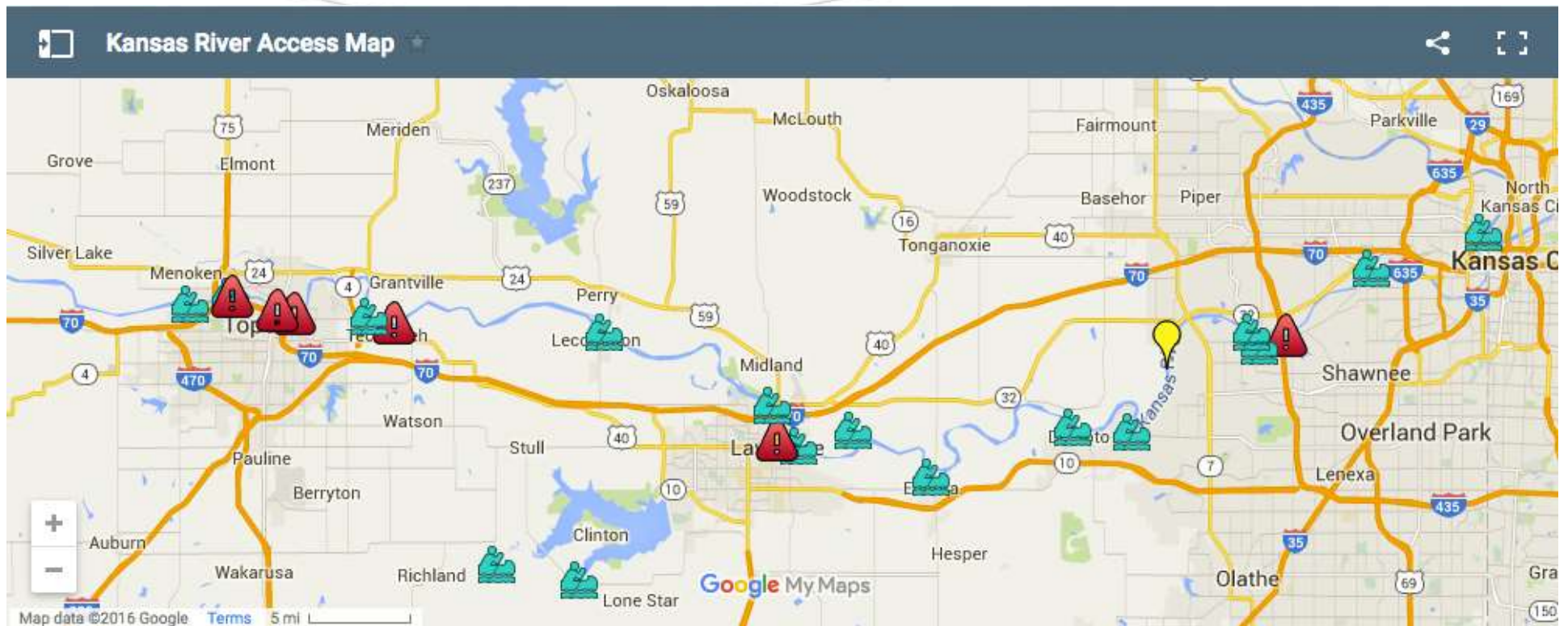
## Generally Safe vs. Potentially Dangerous Rapid Passage







# Dams





## Dam, Spillway, Weir Hydraulics

**VERY DANGEROUS**

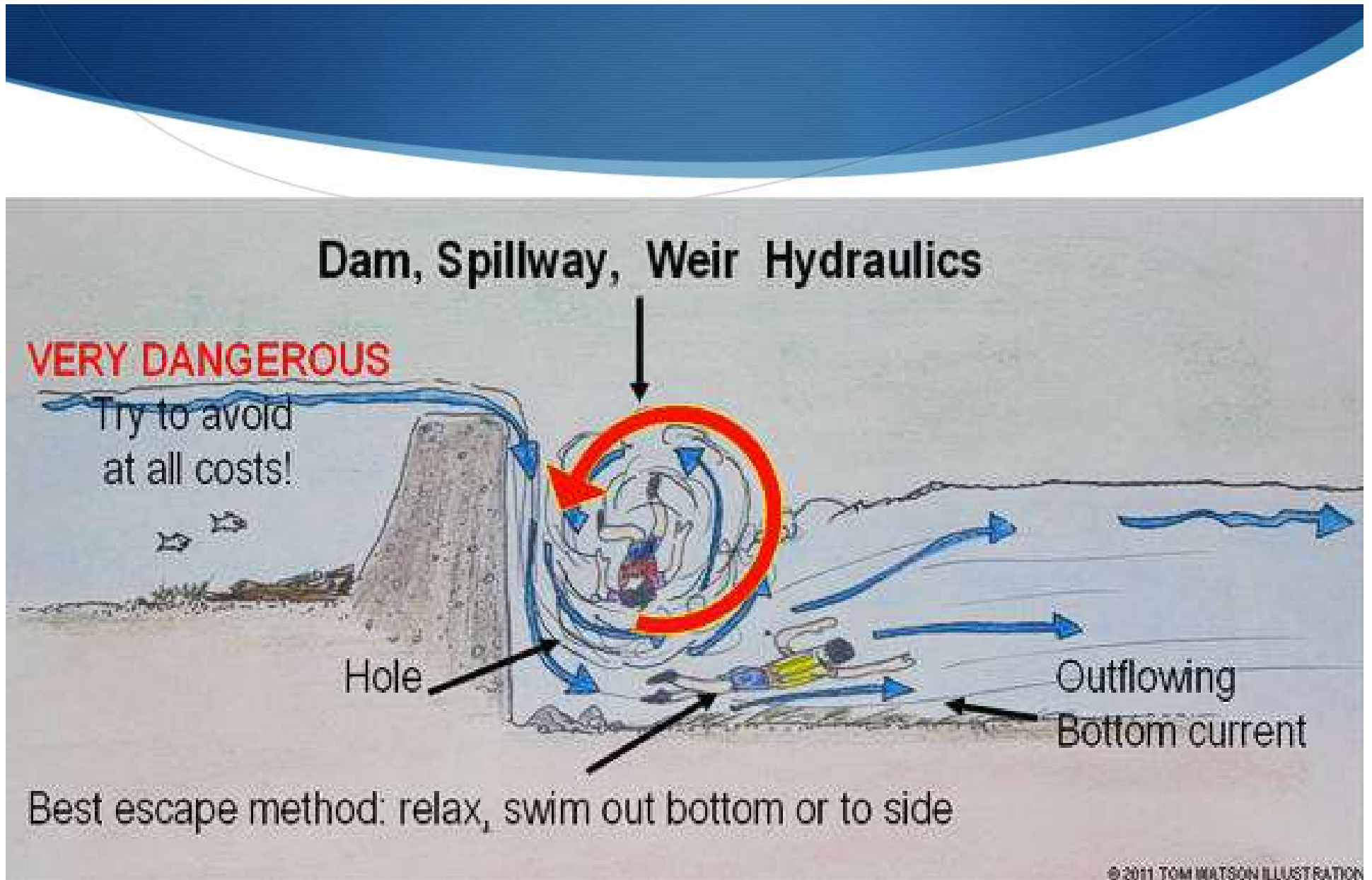
Try to avoid  
at all costs!

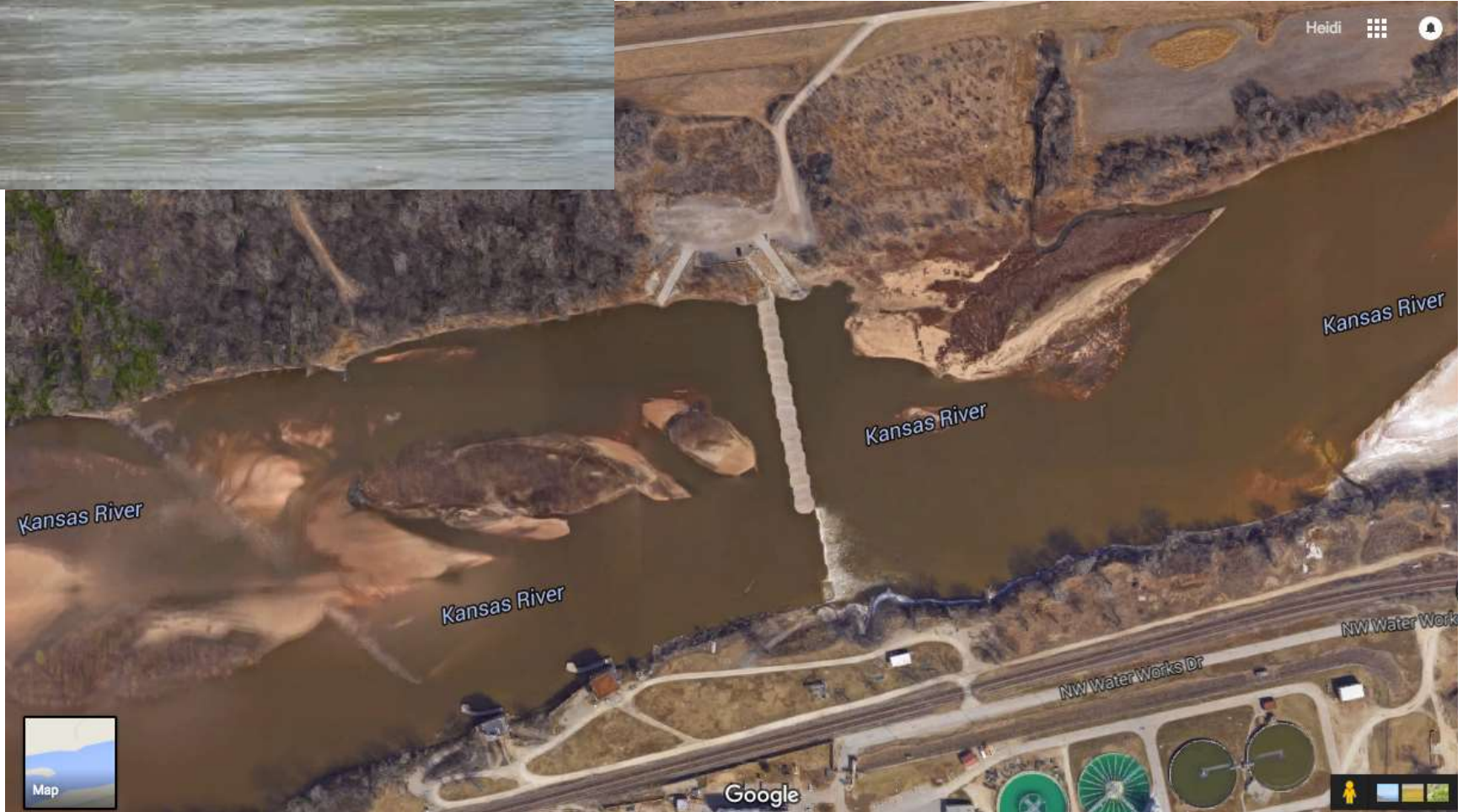
Hole

Outflowing  
Bottom current

Best escape method: relax, swim out bottom or to side

© 2011 TOM WATSON ILLUSTRATION







# Dredge Cables

