

Mapping Your Connection to the Kaw

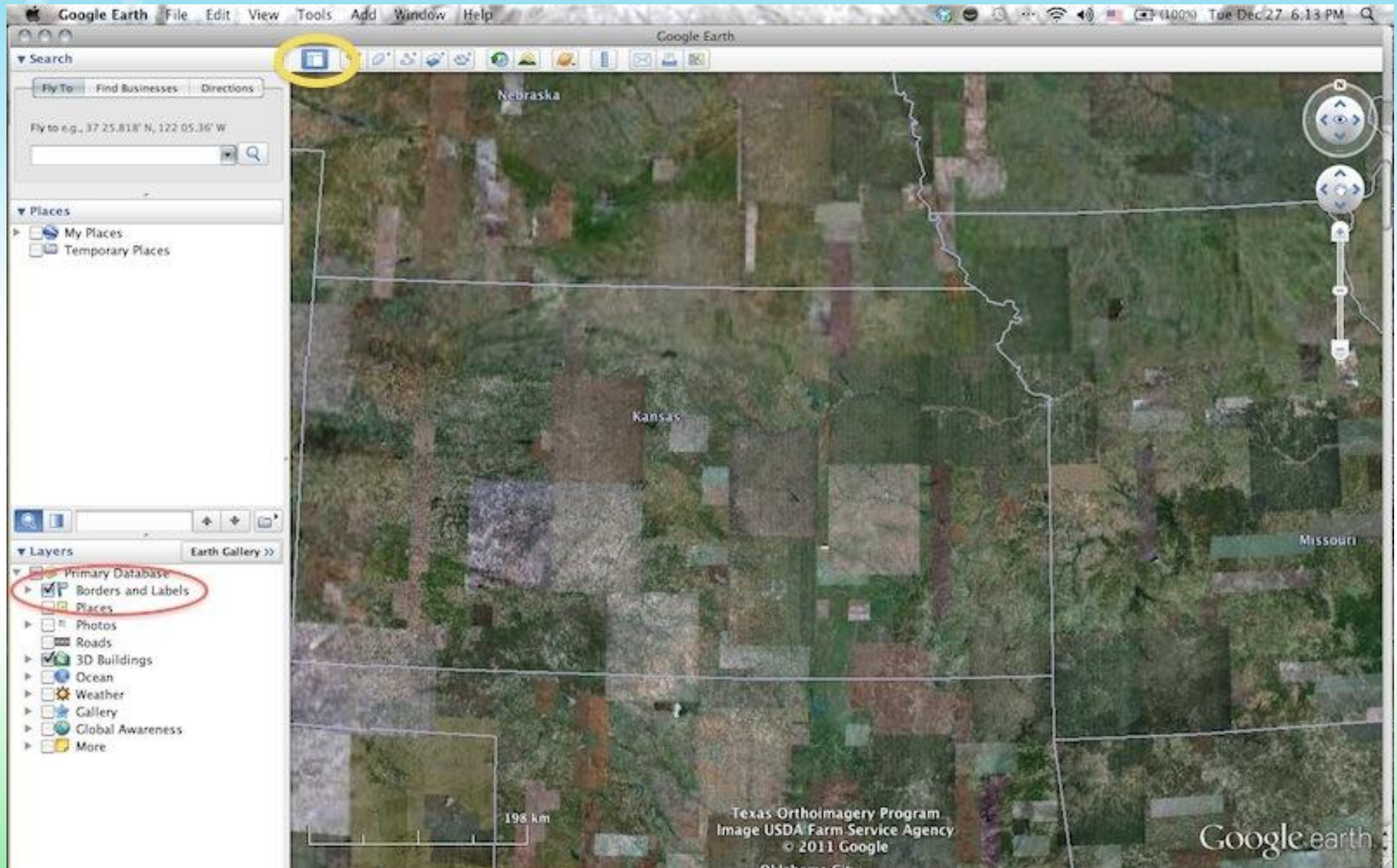
by

Dr. Cynthia Annett and
Ron Hall, Google Certified Trainer

Zoom in by double clicking on a spot on the globe you want to visit or you can use the zoom and pan tools on the right side



Make sure you can see the sidebar, if not click on the button that is circled in yellow on the picture below. Also make sure the Borders and Labels layer is checked (its circled in red)

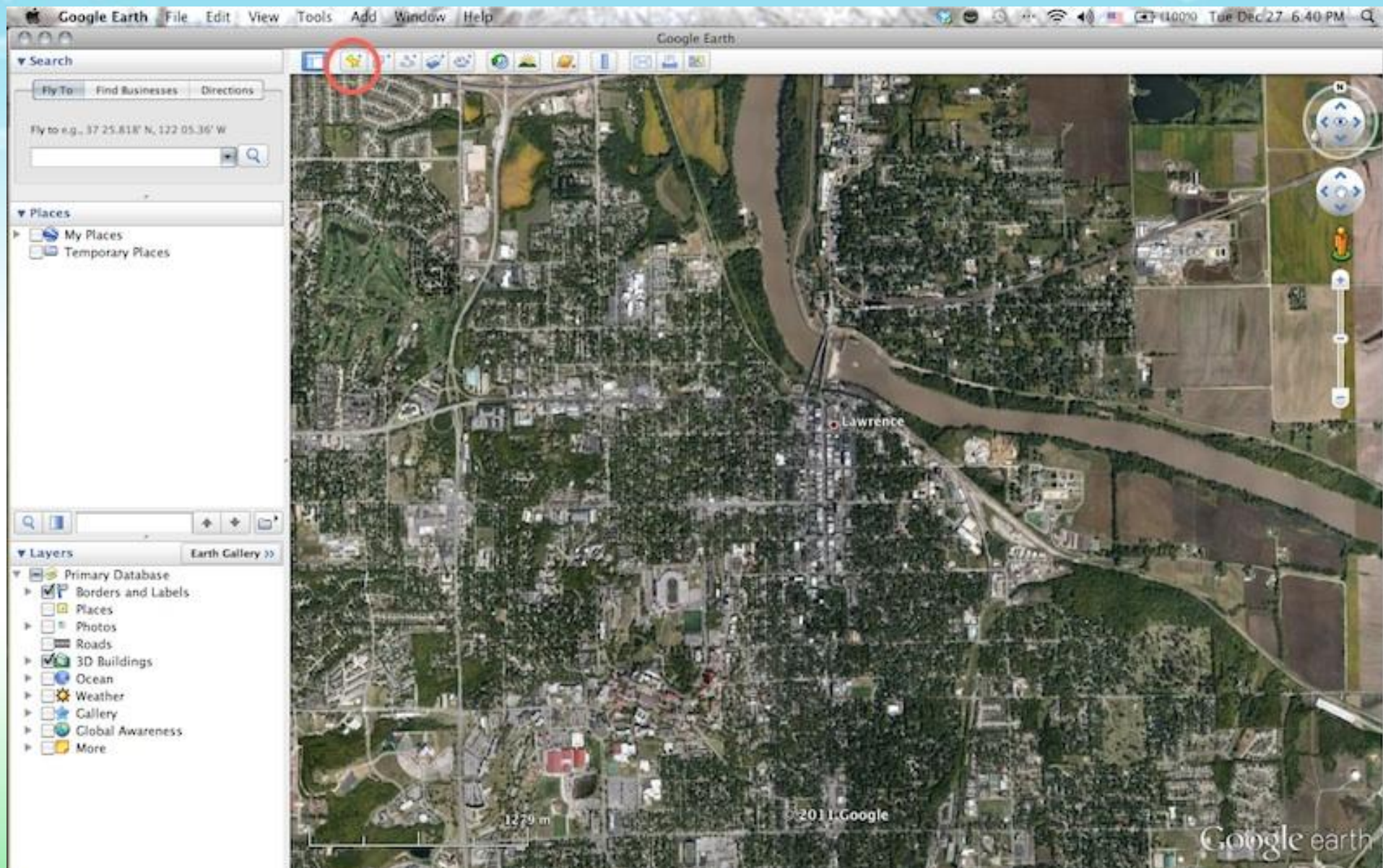


A little aside about online safety

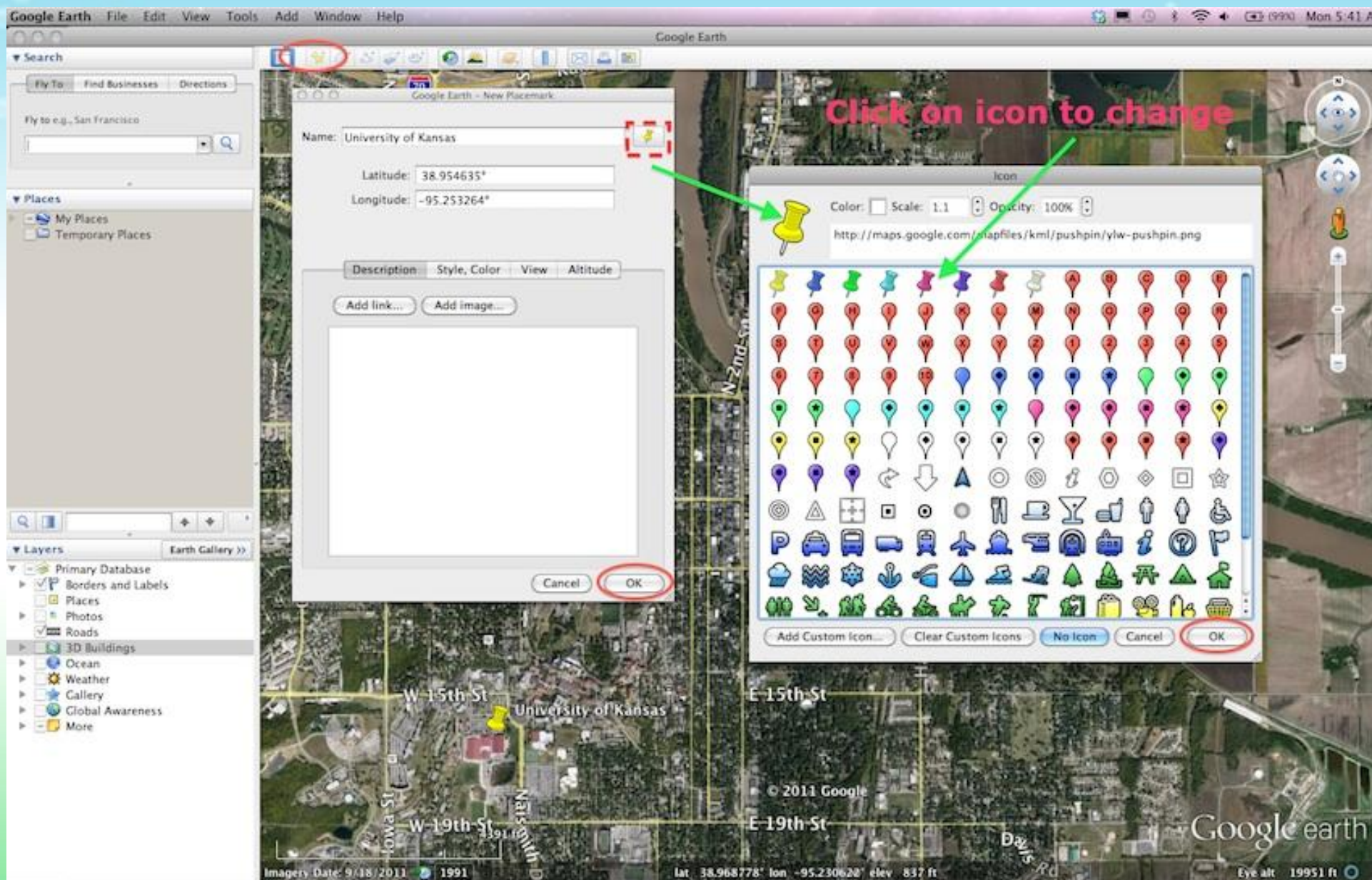
Please Note: We will use your school as the starting point for our exploration of the Kaw

You should not ever put your house on a map that you plan to make public on the web

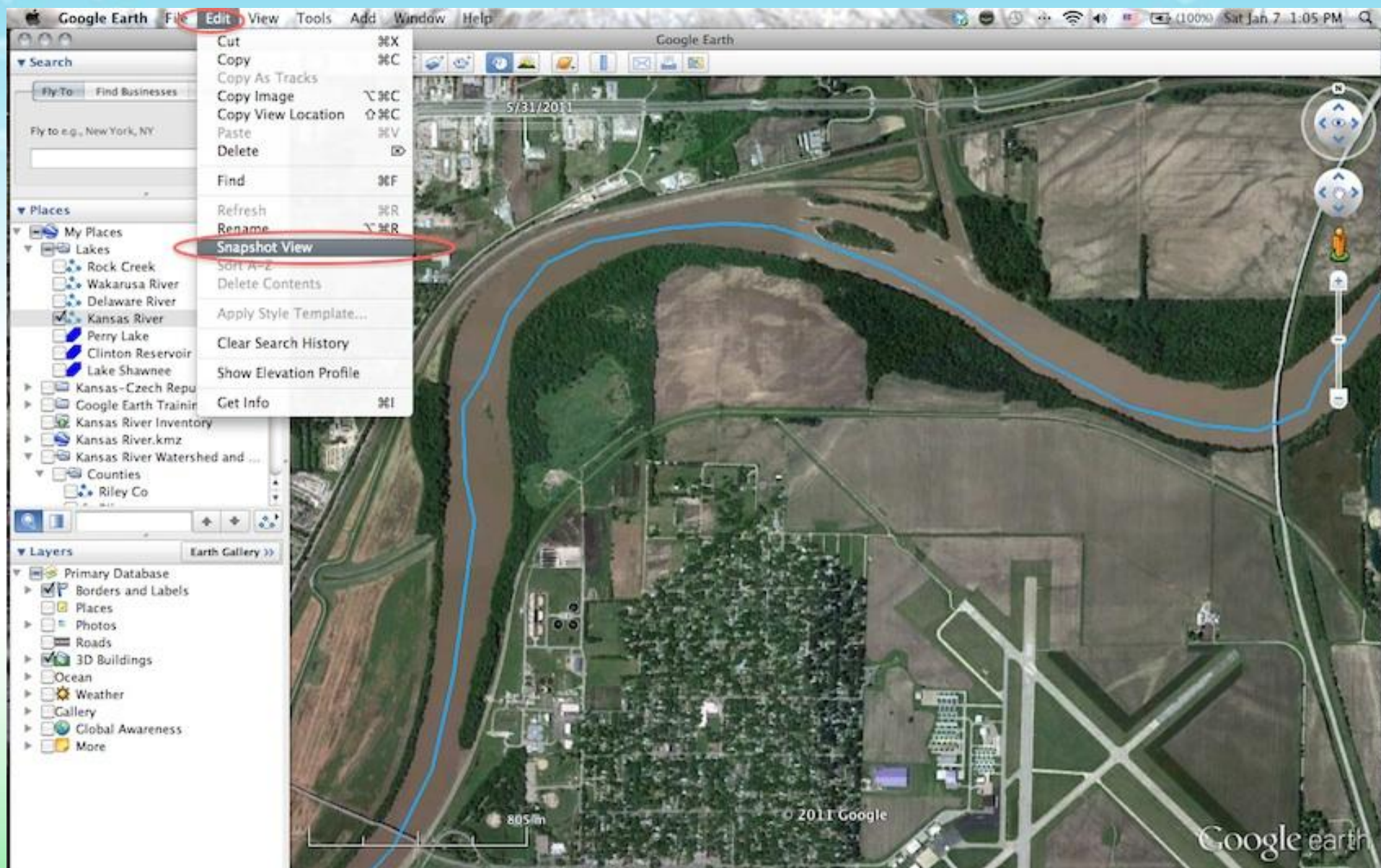
Now find your school. We have zoomed in to KU in Lawrence on the picture below. Add a map marker by clicking on the button circled in red below. Drag the map marker to the location you want.



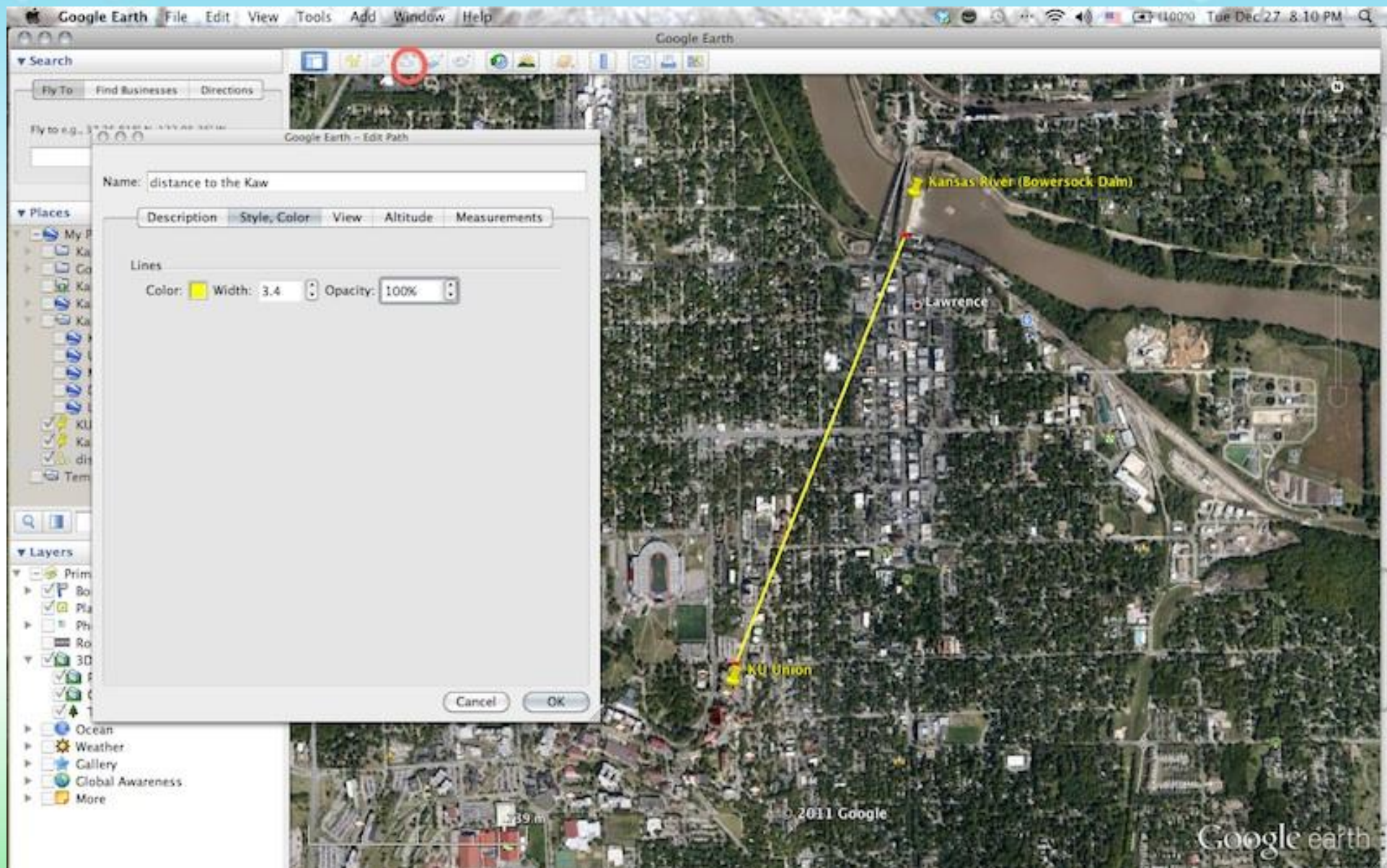
Type in a name for your marker, then click in the description box to make it show on the map. You can change the way the marker looks by clicking on the yellow pushpin on the right side of the dialog box. You can change the color as well. Make sure you click "OK" when you are through.



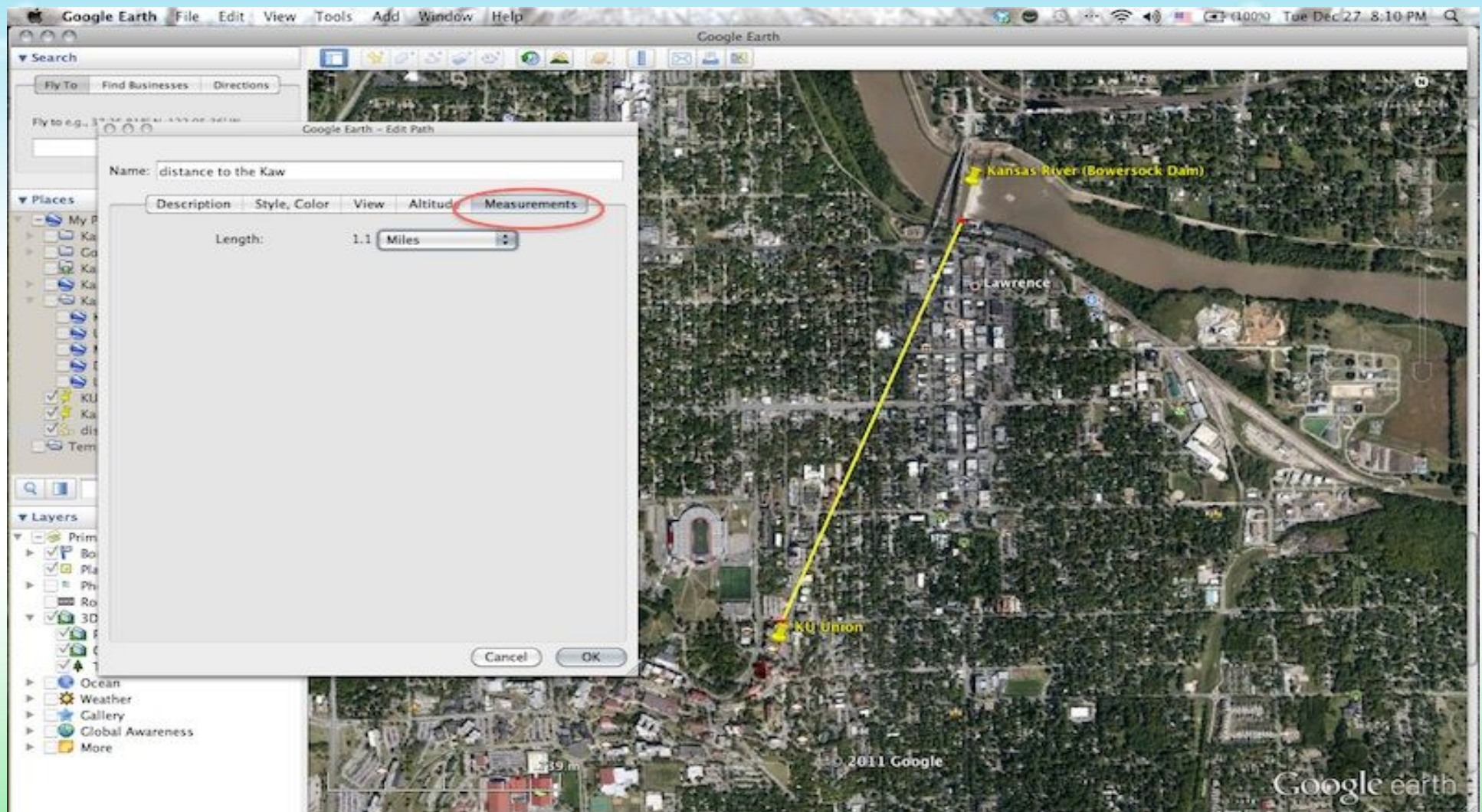
You can set the zoom level and angle of view for the marker by highlighting the marker in the sidebar, clicking Edit>Snapshot View



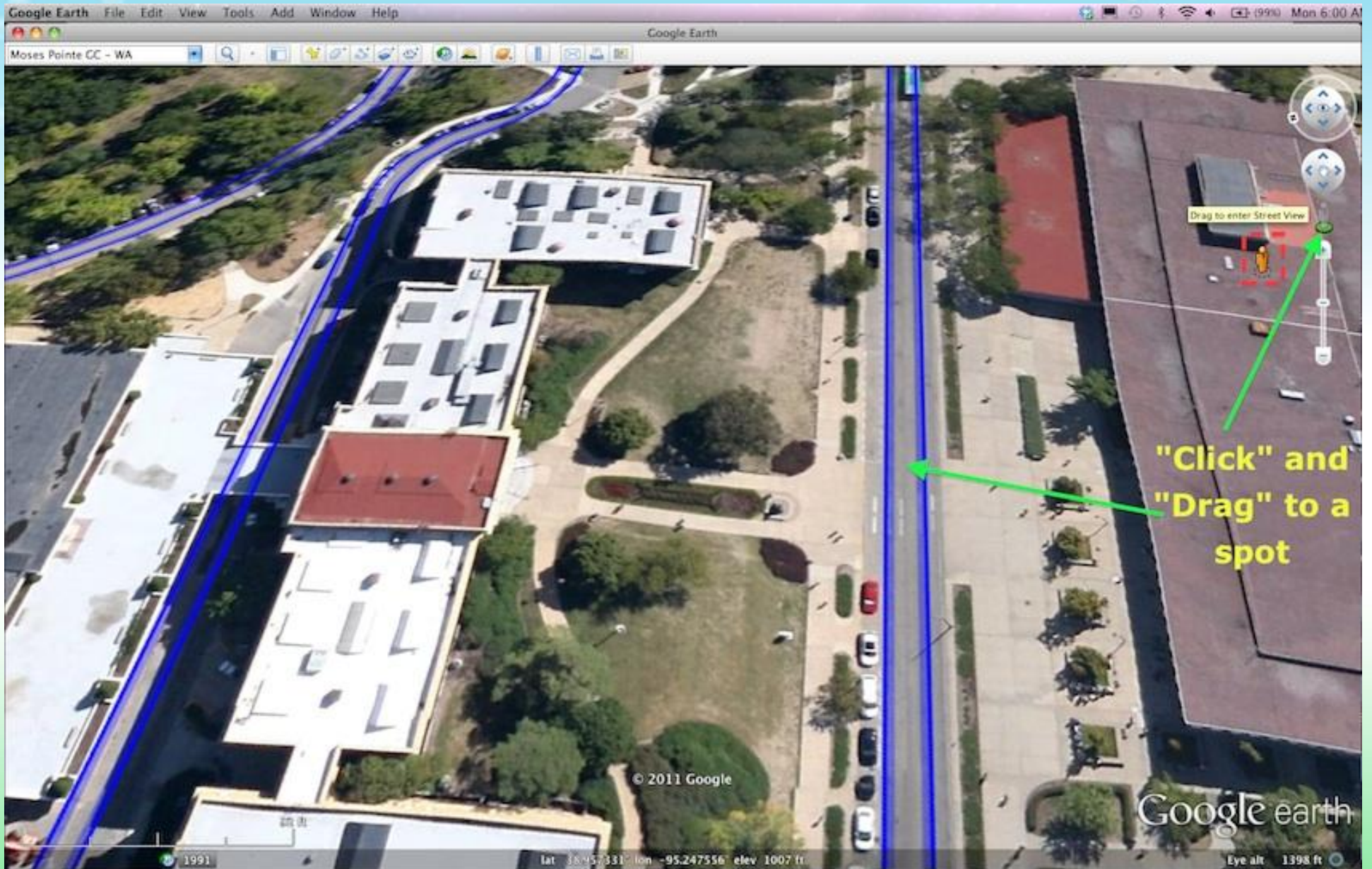
Find the Kansas River and mark it. Now click on the path tool (circled in red) and draw a path from your school to the river.



Measure how far it is from your school to the Kansas River– you can do this by clicking on Measurements in the dialog box. Make sure you look to see what units you are using and if need be change the units to something that makes sense (like miles instead of inches)



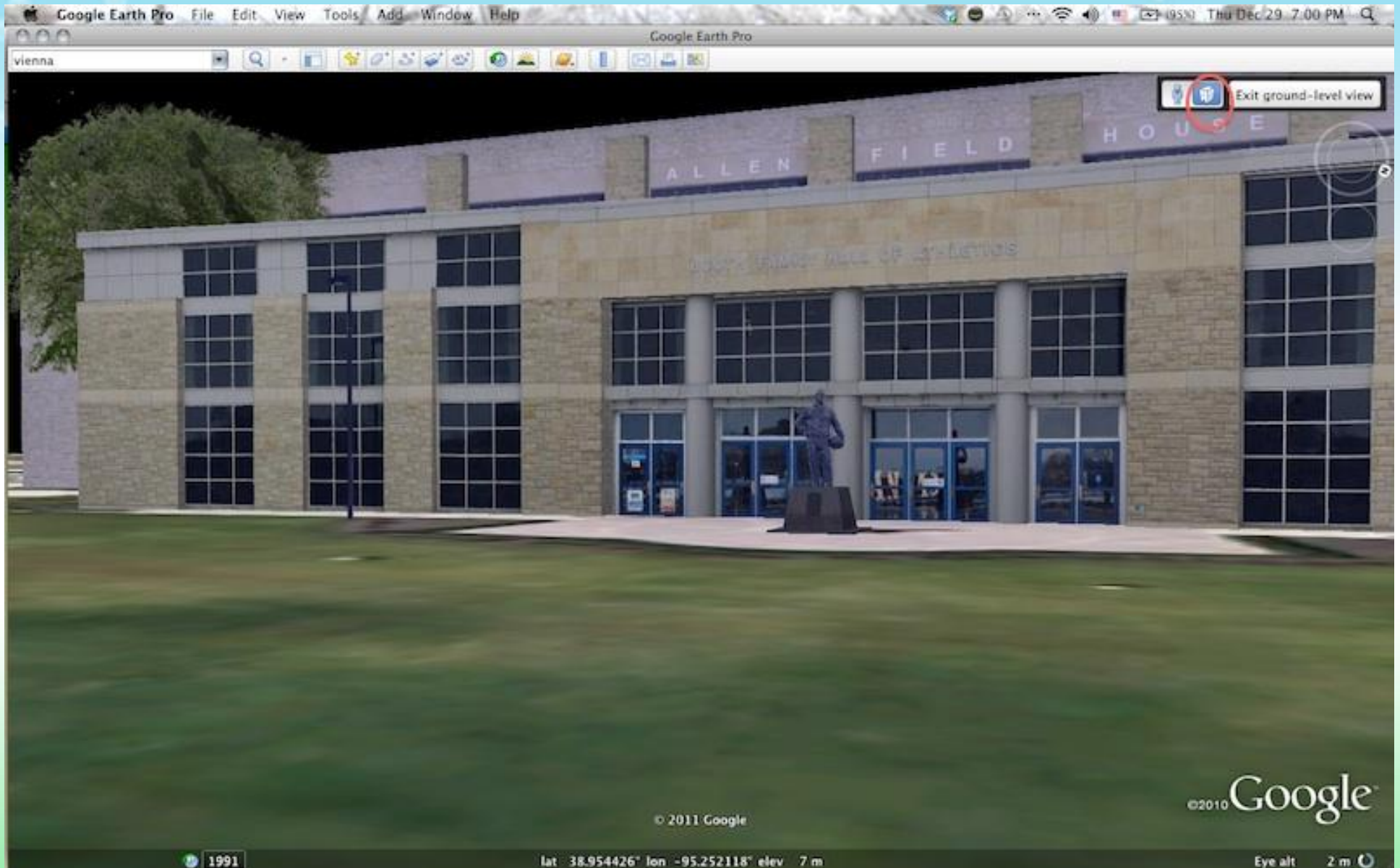
Use Street View to explore communities along the Kaw



Street View will show you photos taken by Google. You will only see photographic images in places where Google has visited in one of their special green cars (there's no Google boat yet so you won't see Street View on the river)



You can also click on the little building icon next to Street View and look for buildings that have been modeled in Google SketchUp

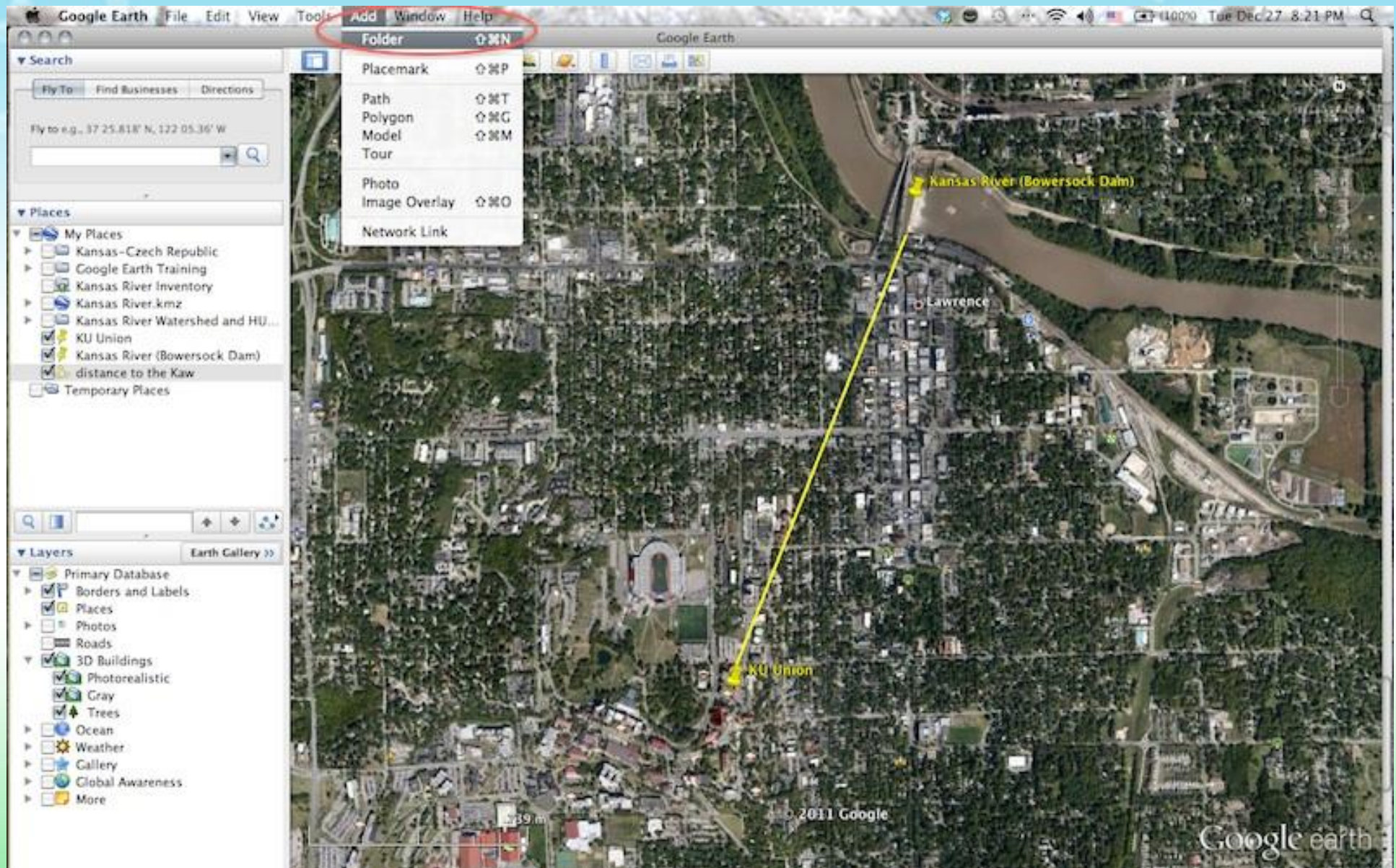


Now you are ready to explore the Kaw

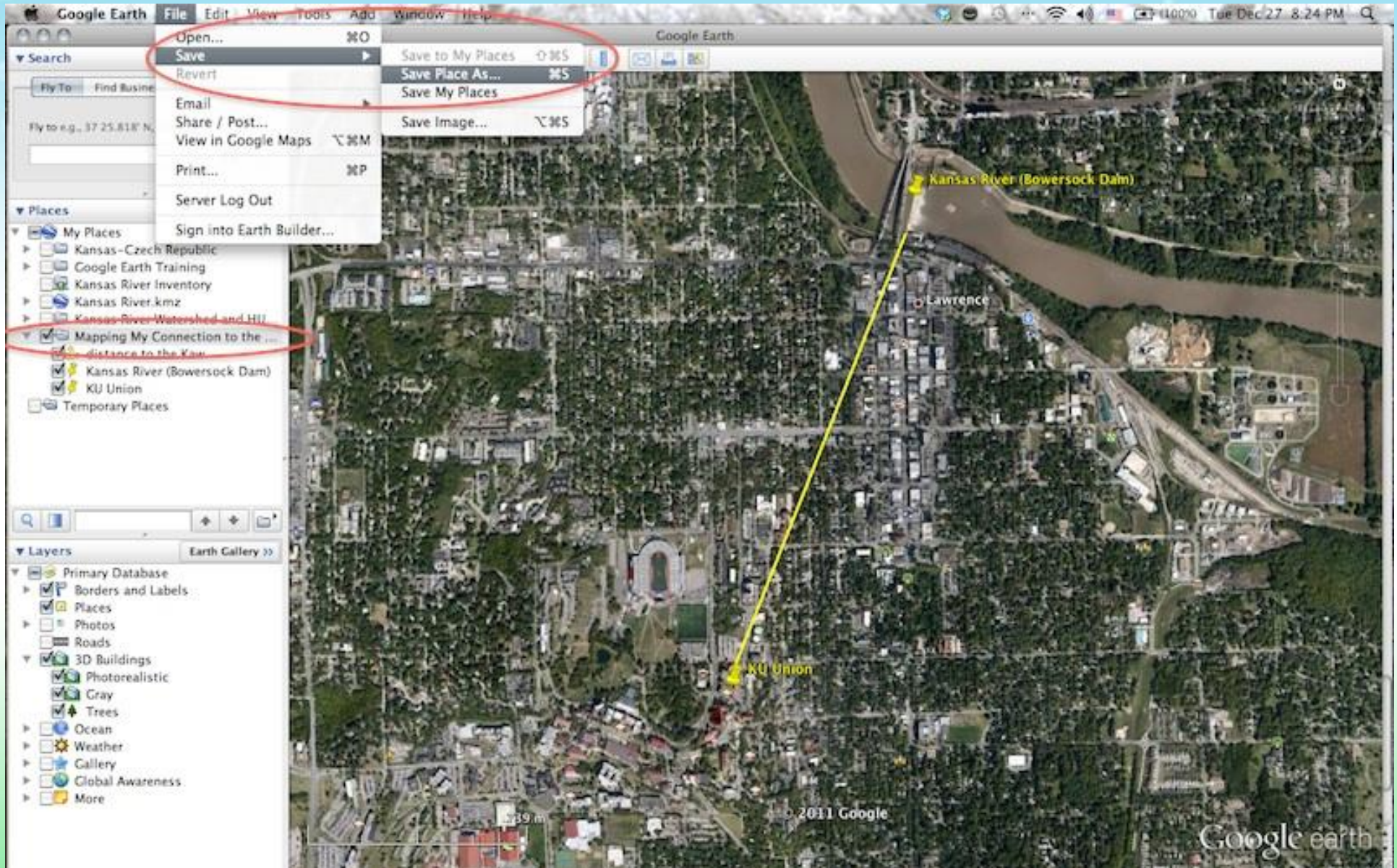
Look around and see what else you can find out about the river near where you live. Use Map Markers to mark interesting things that you find.

- Are there any bridges or dams on the river near where you live?
- Can you find any islands in the river?
- How about sandbars?
- Are there trees along the river?
- Do you see any industries, electrical power plants, or other “point sources” for pollution?
- What is the most interesting thing that you have found along the river?

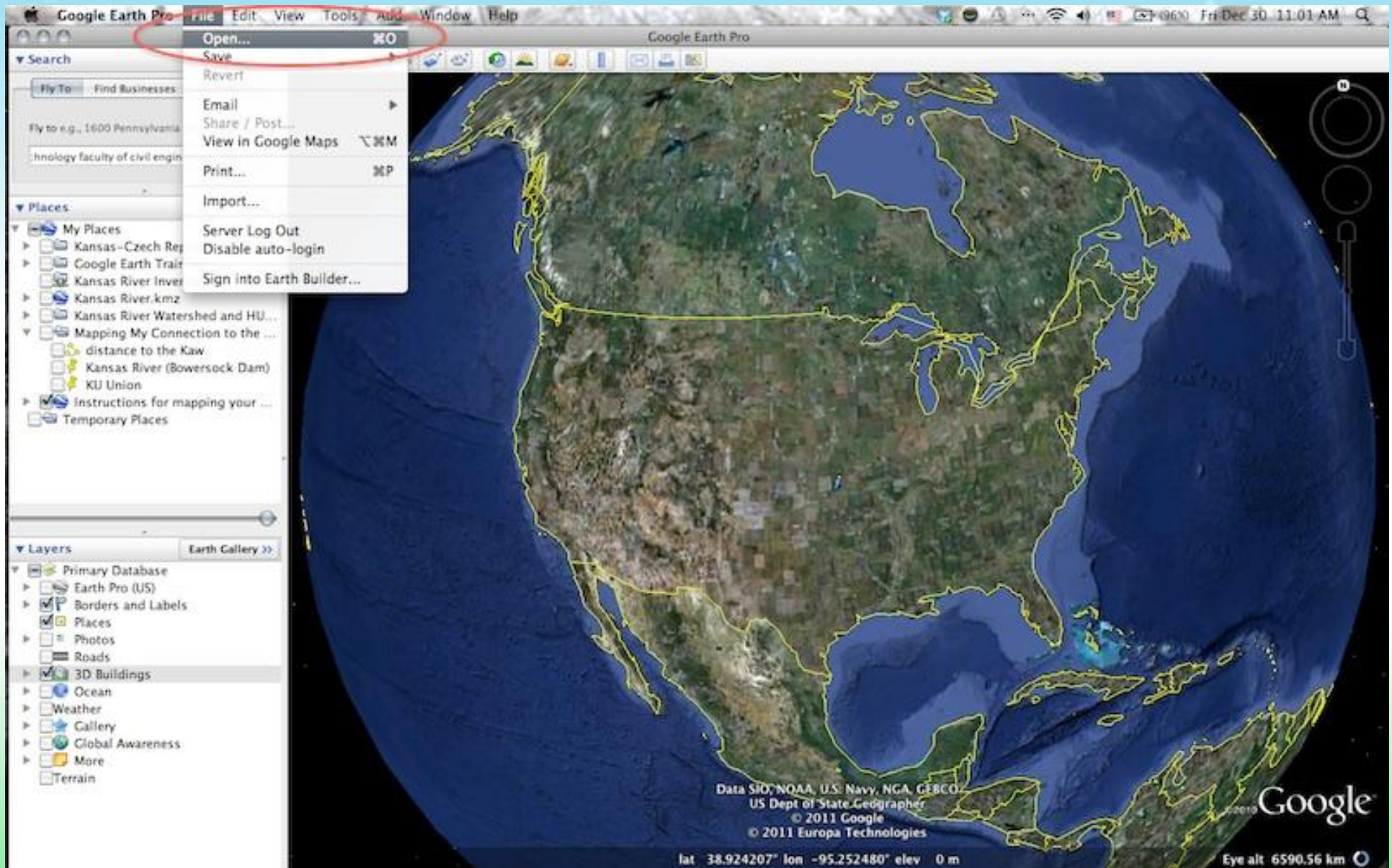
Save all of your work. Create a folder for all your markers, paths, etc. Click on Add then select Folder. Name the folder then drag and drop everything to it.



Click on the folder to highlight it, then click on File then Save and pick Save Place As. Save your folder to your computer as a kml or kmz file (kmz is a zipped version of the kml file). You can then email the file to someone else to open in their Google Earth.



You open the file by clicking on File>Open and then picking it



Congratulations!

**You have made your
own personal map of
the Kansas River!**